

Multi-Satellite Observations of Temporal and Spatial Distributions on Island Wakes Southeast of Taiwan

Zheng-Wei Lai(NTNUES)

Supervised by : Prof. ZW Zheng

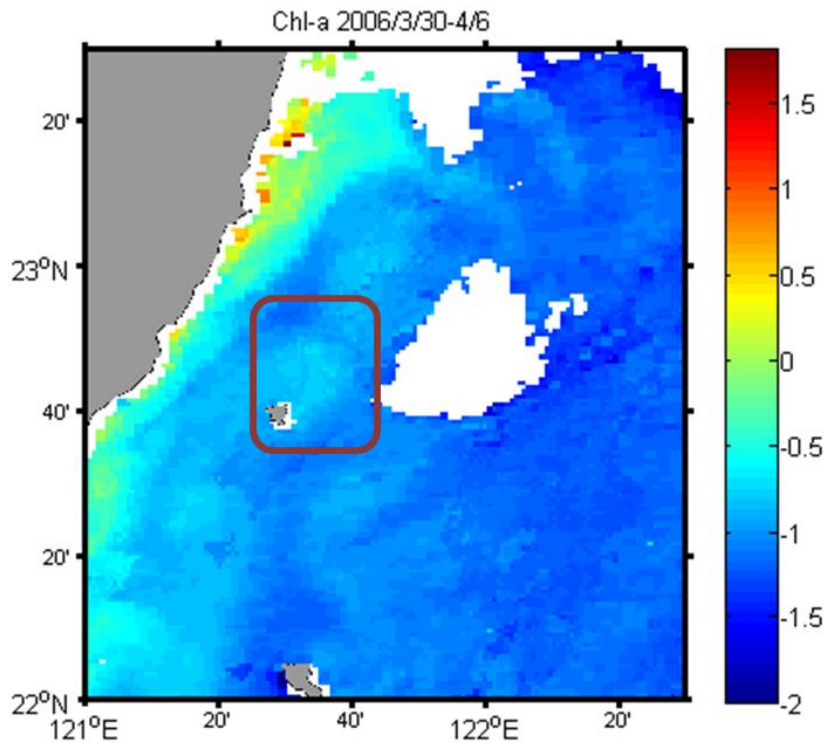
Presentation Outline

- Introduction
 - A brief description of the research theme
- Source & Methods (Tool)
 - The source about current velocity, SST, CHLA
- Results & Discussion
 - Part1 – The Strength of Kuroshio
 - Part2 – The Location of Kuroshio
- Summary & Future Prospects

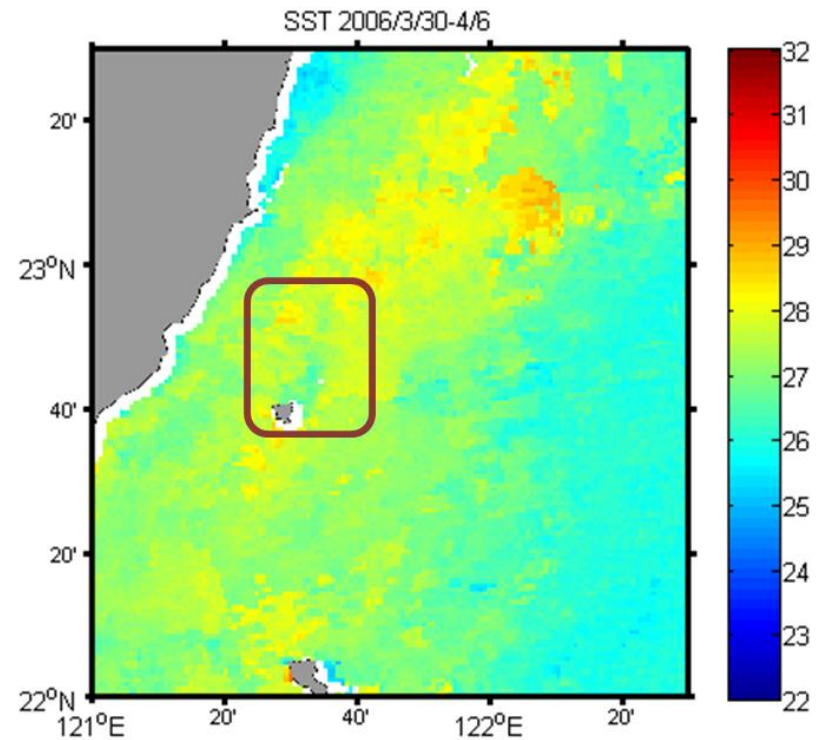
INTRODUCTION

What is Island Wakes ?

Chla

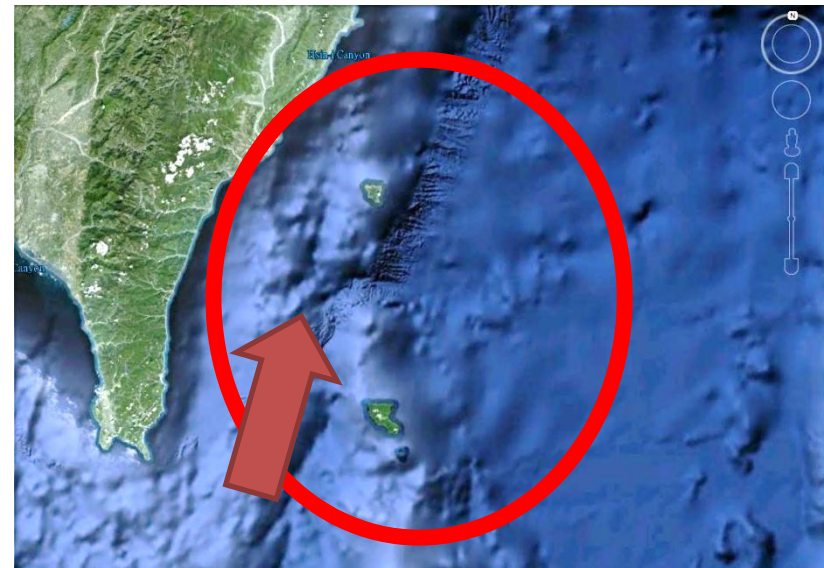


SST



What's the Goal of This Work?

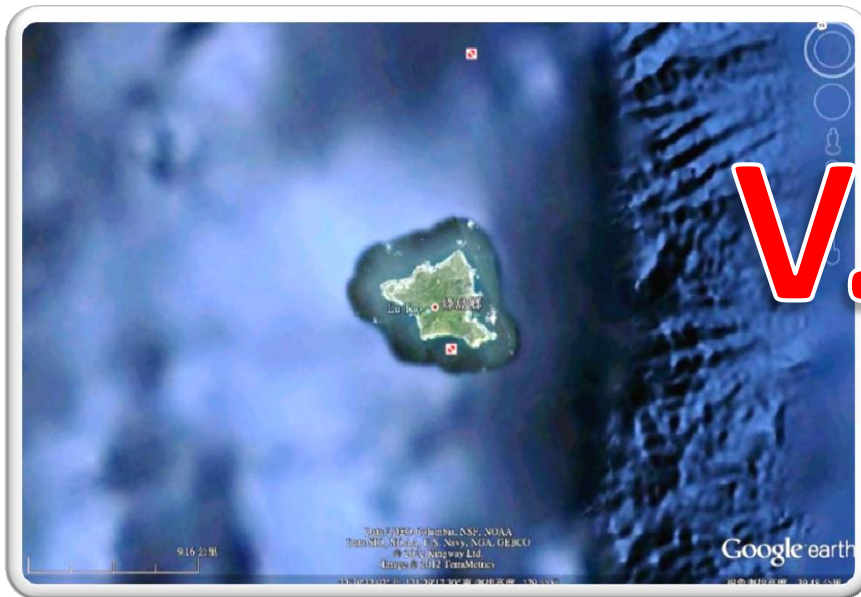
- Find the relationship between
the " **Kuroshio** " and " **Island Wakes** "



The Study Area

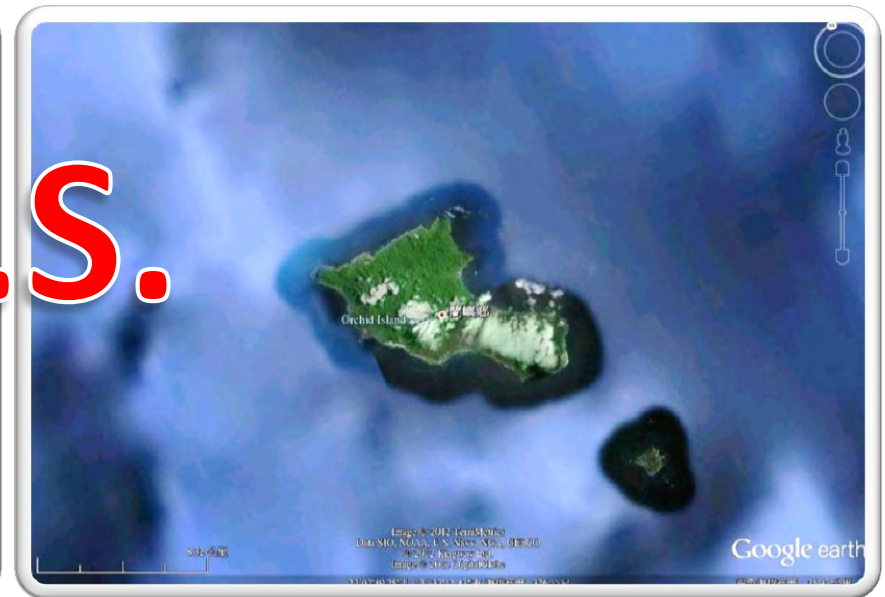
-Green Island **or** Lanyu?

Green Island

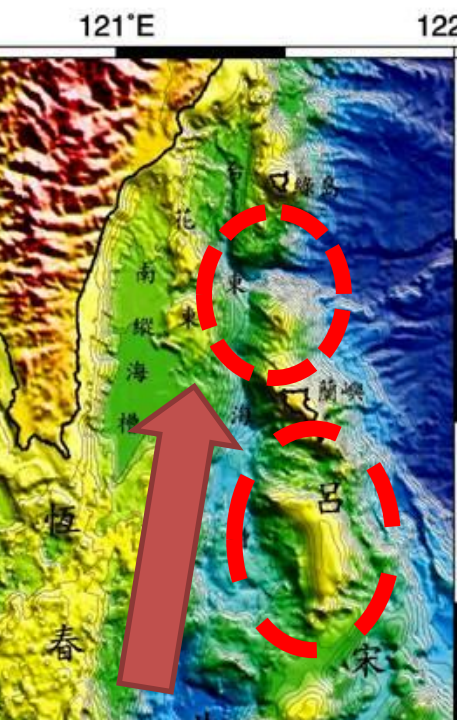
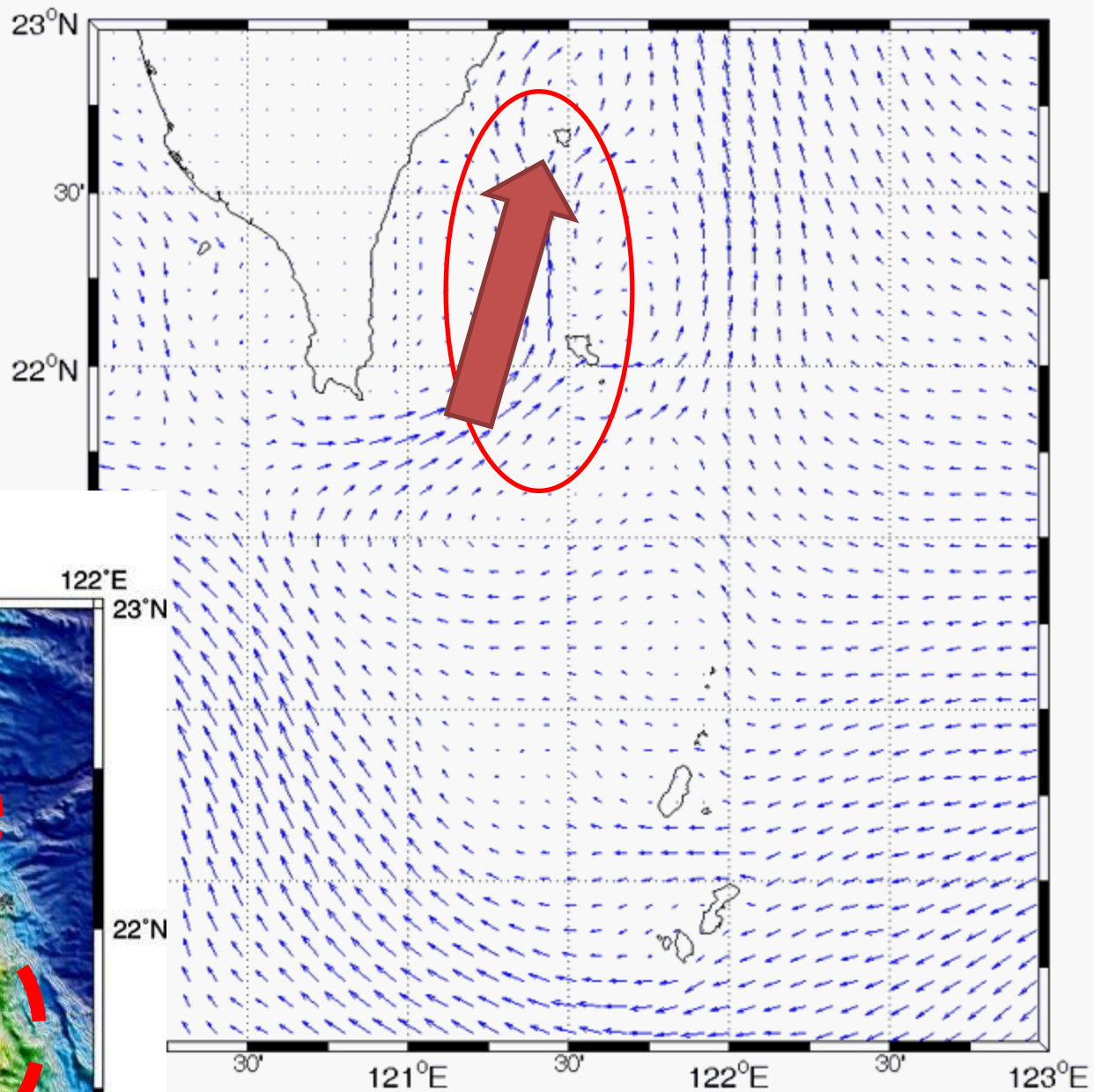


V.S.

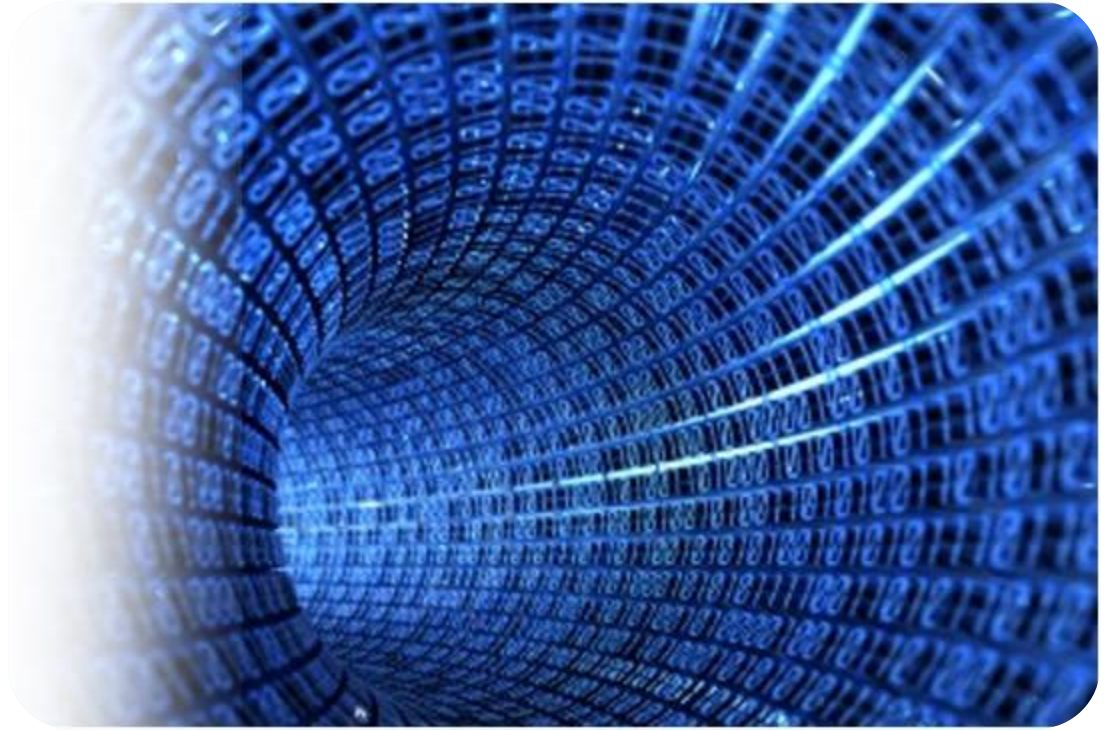
Lanyu



Sea surface flow



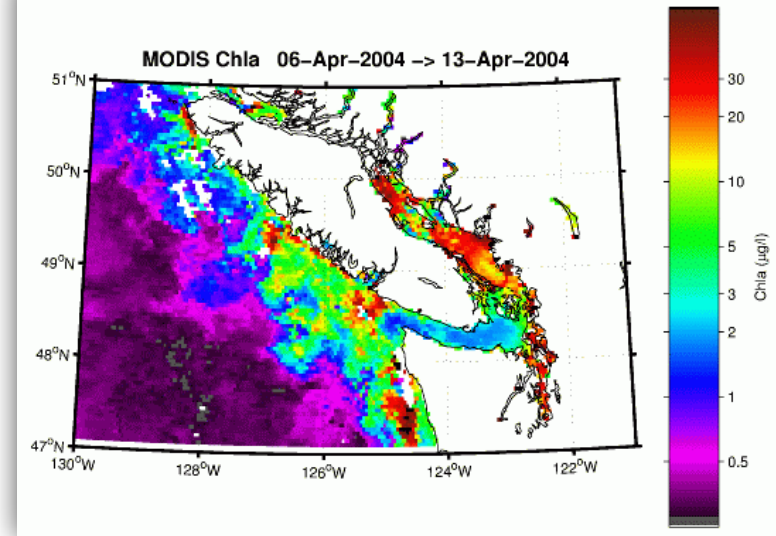
glb_a_nalysis_1_20E123E20N23N_2_0040101_2_0040331.nc-1



DATA & METHODS

Data & Methods

- CHLA



- <http://oceandata.sci.gsfc.nasa.gov>

- NASA-Aqua Satellite

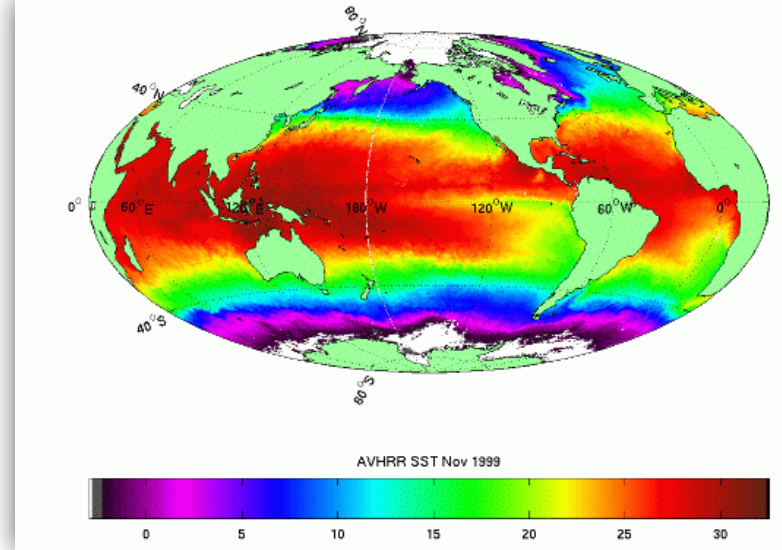
- MODIS(Moderate-resolution Imaging Spectroradiometer)

- Eight days average

- The spatial resolution of 4kmx4km

Data & Methods

- SST



- <http://oceandata.sci.gsfc.nasa.gov>

- NASA-Aqua Satellite

- MODIS(Moderate-resolution Imaging Spectroradiometer)

- Eight days average

- The spatial resolution of 4km

Data & Methods

- **Velocity of Current**

- <http://tds.hycom.org/>

- Dataset: /thredds/ncss/grid/glb_analysis

- Daily sum of data

- Global $1/12^\circ$ (~8km) Analysis

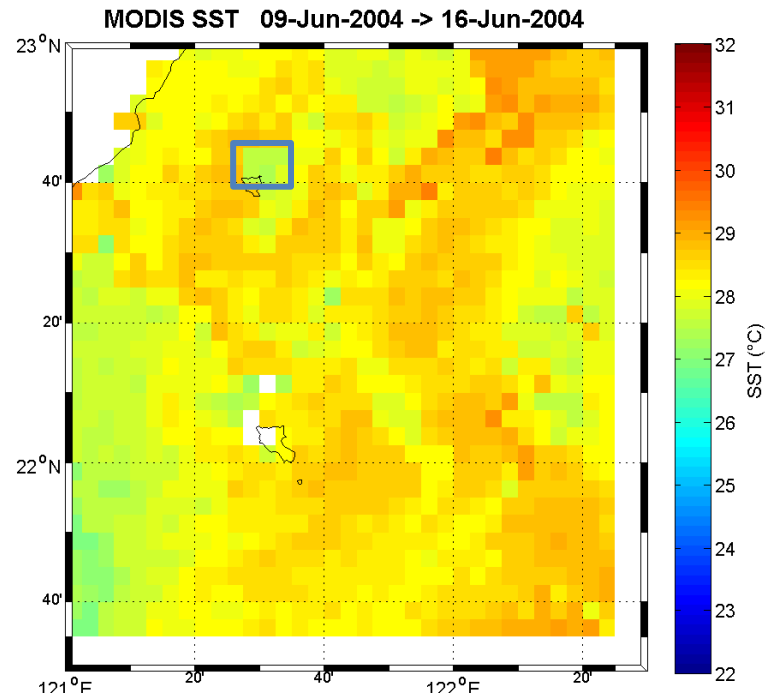
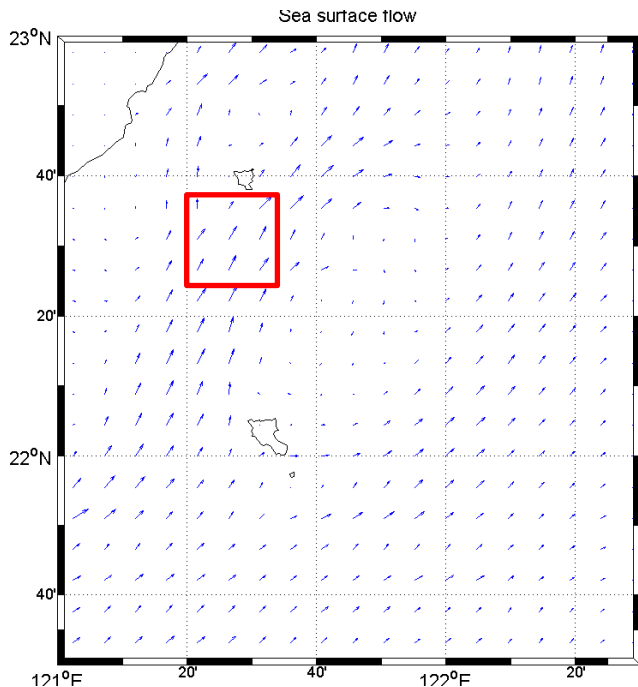
Data & Methods (tools)

- Matlab 2011b
- Excel of Microsoft Office 2010

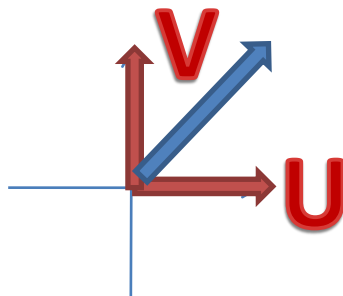
RESULTS & DISCUSSION

Part1-Statistical Analysis

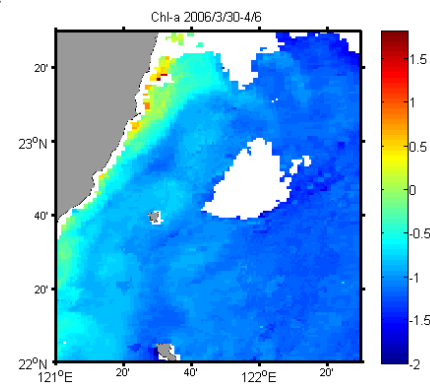
The Strength of Kuroshio vs. IWs



Current
V velocity

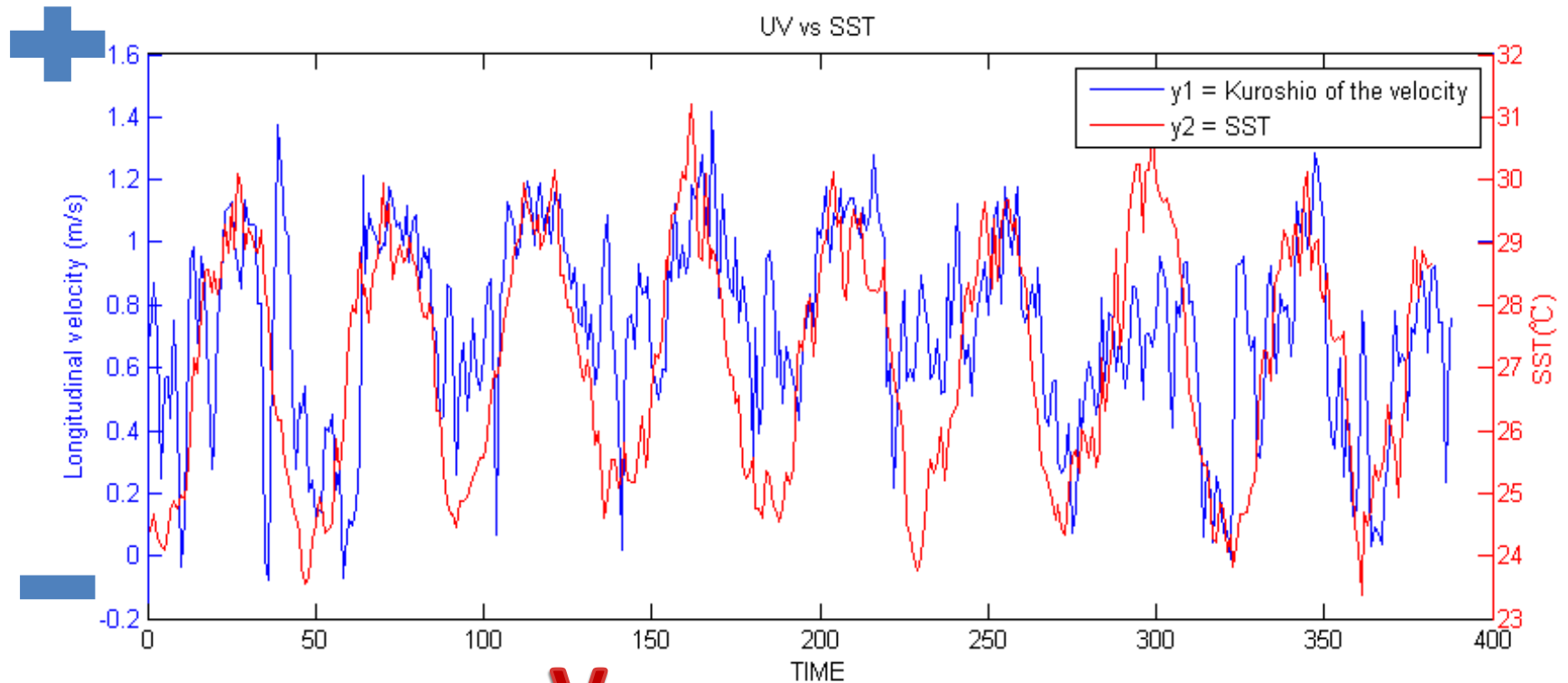


SST/Chl-A

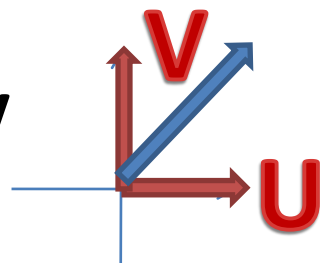


Part1- Statistical Analysis

Comparison of The Strength with SST

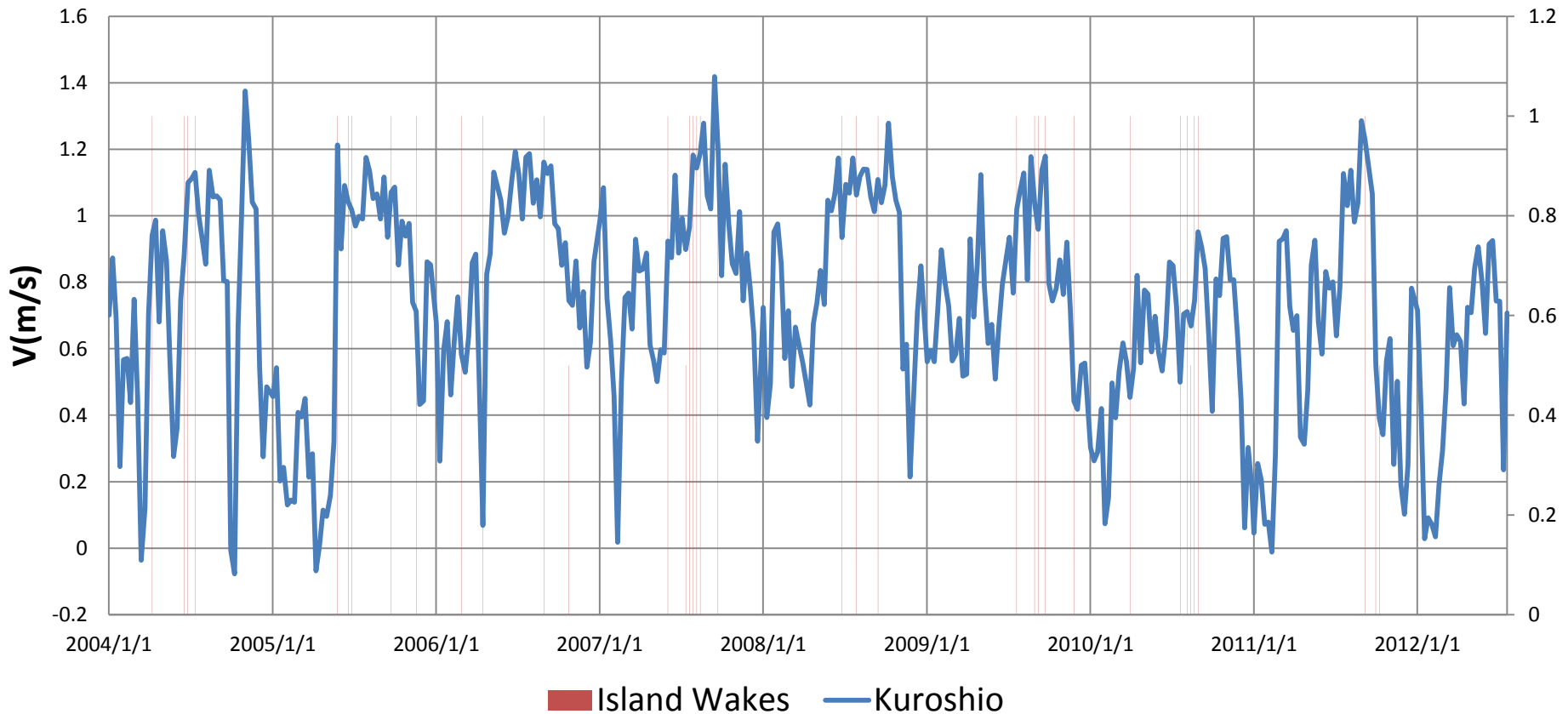


V velocity



Part1- Statistical Analysis

The Strength of Kuroshio v.s. Island Wakes



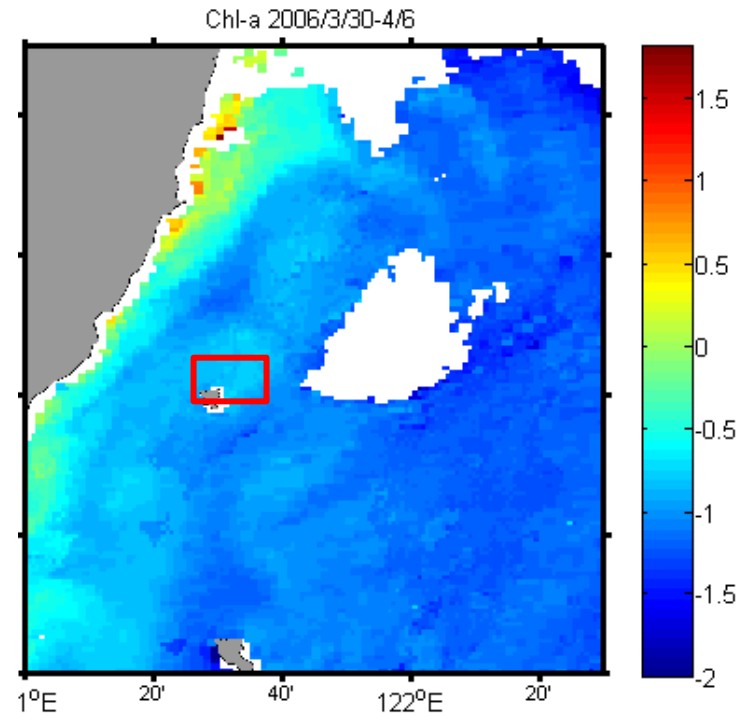
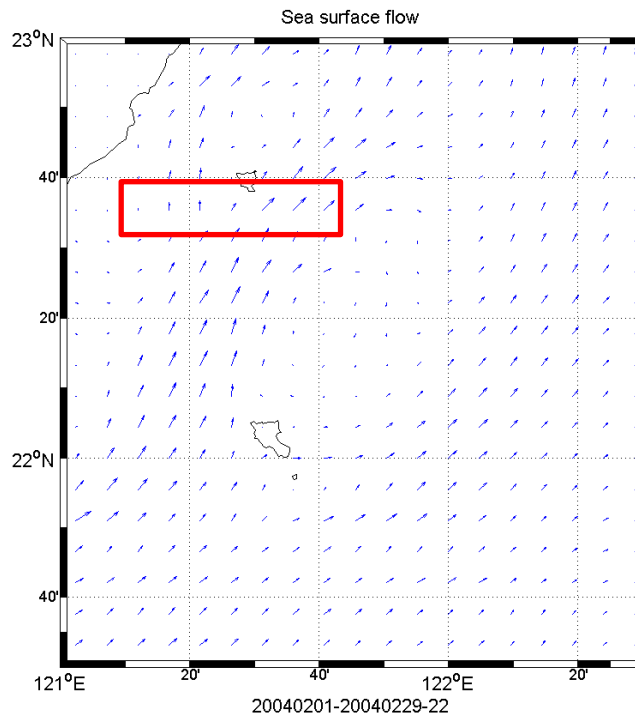
The IW mainly took place in summer?

Results & Discussion

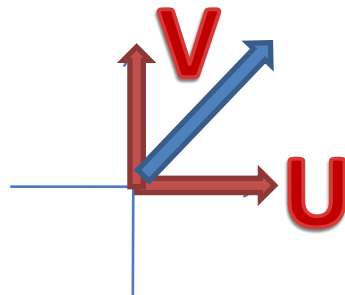
So far, we don't know this is the truth or due to data limitation?

Part2-Statistical Analysis

The Kuroshio migration vs. IWs



Current
V velocity

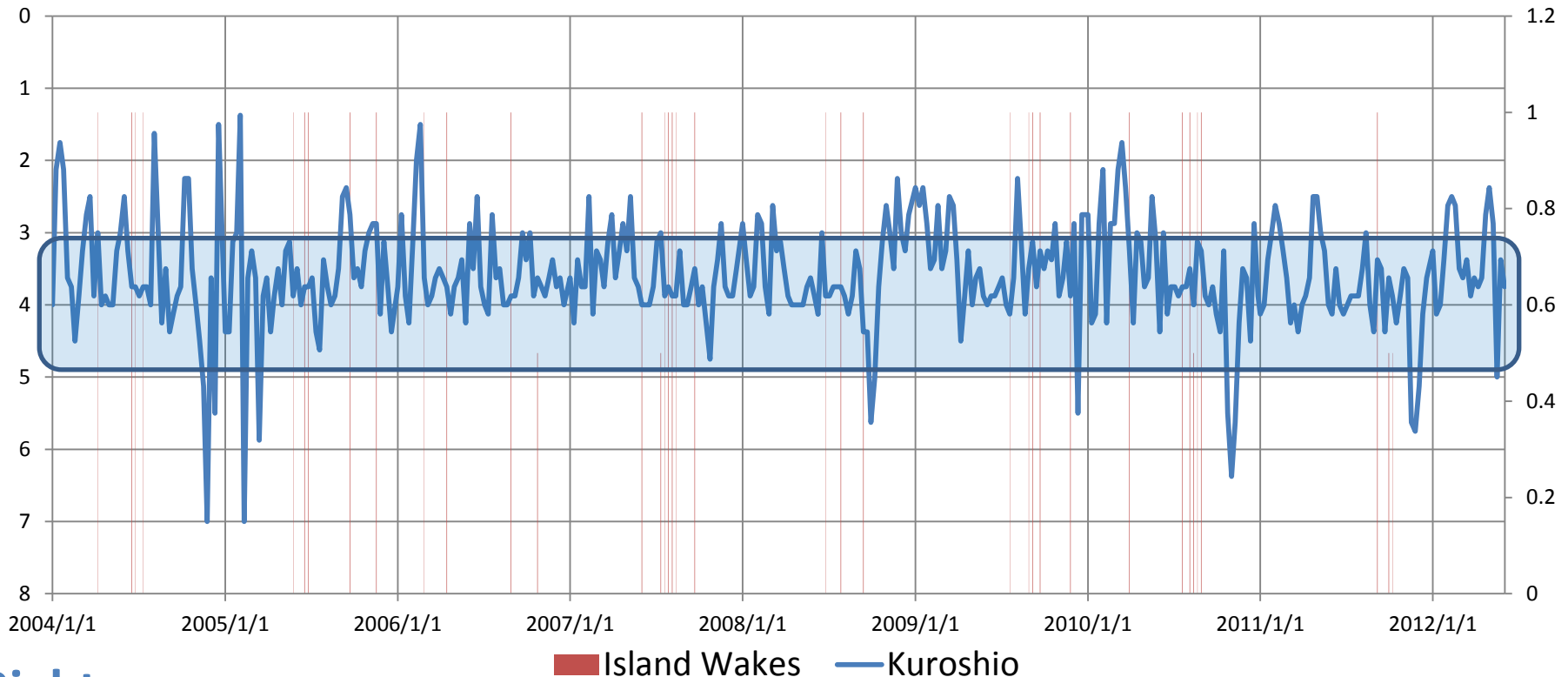


Chl-A



Part2- Statistical Analysis

Location of Kuroshio vs. Island Wakes

Left



Right

No migration => IWs  The more the Kuroshio shift => IWs 
Results & Discussion
This is the result what we expect!

CONCLUSIONS & FUTURE PROSPECTS

Conclusions & Future Prospects

So far, I preliminary learn the skill for data process (visualization) and analysis, but we don't really clarify the relationship between IWs and Kuroshio variations.

Future works

1. HYCOM-SST to find IW
2. The influence of wind
 - 1) Impact of Wind Wakes

Thanks for Your Attention